

Overview

Silo Nexus AI — AI that thinks like an investigator — is built directly into your Silo Workspace to help you get from raw information to actionable intelligence faster. With a single hotkey or click, you can capture content from any application in your workspace — the browser, Telegram, Maltego, or any other app — and Nexus AI delivers an instant, contextual analysis tailored to your investigation.

Rather than requiring you to craft prompts or switch between tools, Nexus AI contextualizes results, surfaces relevant leads, and guides you through your research. You can drive an entire investigation through point-and-click interactions, or type your own queries when you want to ask something specific.

Five Core Innovations

1. **Total Anonymity** — Every query is decoupled from your identity and organization affiliation. Our licensing model ensures queries are never retained for vendor training. External resources see the request, never the requester.
2. **Guided Analysis** — Proprietary instructions guide the AI agent through digital investigation tradecraft. Active Annotations identify notable topics and suggest quick pivots without disrupting your workflow. Nexus contextualizes results and prioritizes actionable intelligence over raw data.
3. **Uniform Expertise** — Pre-configured prompt libraries eliminate the need to craft your own prompts. Logic flows, and tradecraft are defined for specific mission sets, ensuring you operate with specialist-level precision — regardless of experience.
4. **Grounded Truth** — Every response is anchored to its fully resolved source with specific URLs and transparent reasoning paths. Nexus AI provides a verifiable path to evidence for evidentiary integrity and defensibility.
5. **Encrypted Oversight** — All interactions are captured in an immutable, encrypted log. This provides a tamper-proof audit trail for compliance and internal review without risking external exposure. Your investigative work is always documented and defensible.

What You Can Do with Nexus AI

Silo Nexus AI is a powerful tool designed to accelerate and deepen content analysis during investigations. Integrated directly into the Silo ecosystem, it provides analytical insights that go beyond what traditional keyword searches and static reports can offer, ensuring a seamless transition from content browsing to analysis.

- **Capture and analyze content** from any Silo application with a hotkey or from the Nexus AI interface
- **Get instant first-pass analysis** without typing a single prompt
- **Use the prompt library** for standardized analysis workflows defined by your administrator
- **Click Active Annotations** to pivot deeper into highlighted entities, locations, names, and key phrases
- **Follow the suggested next steps** to explore alternative analytical perspectives and continue your investigation
- **Reinterpret responses** through different analytical lenses without starting over
- **Review source citations** in the Nexus Intelligence section to verify where information came from
- **Examine reasoning steps** to understand how the AI arrived at its conclusions
- **Save, export, and share** conversations via Silo Drive to collaborate with your team

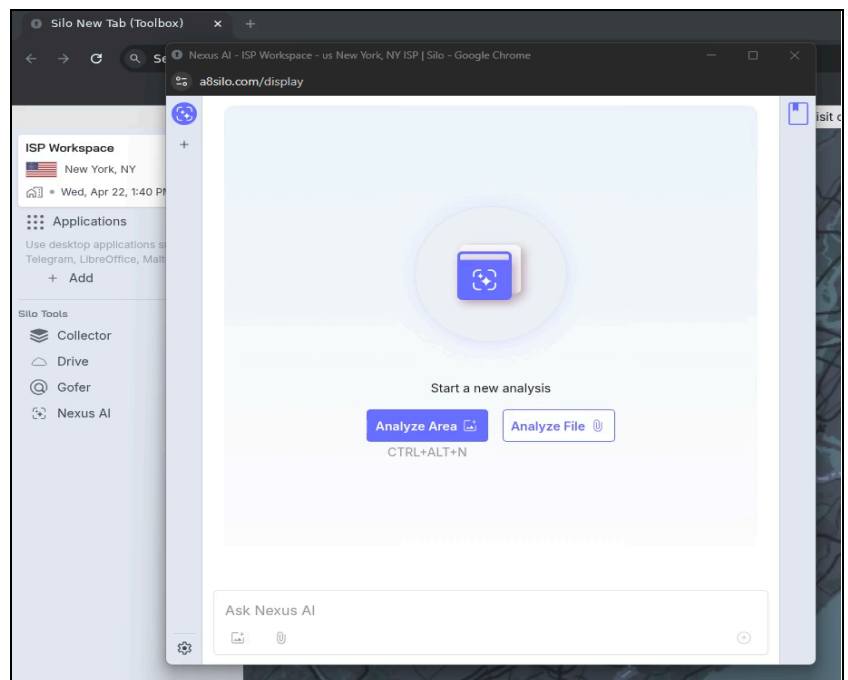
Launching Nexus AI

The Silo Nexus AI feature can be accessed in sessions that are initiated from a Workspace shortcut provisioned by an Administrator, or via a saved Workspace shortcut created by a user using the Silo Launcher. The Nexus AI tool will open in its own window within your Workspace session.

If you do **not** see the icon:

- Nexus AI may be disabled for your organization
- You may be on a Legacy SKU that doesn't include Nexus AI
- Contact your administrator for access

Once in a Workspace session, the tool can be launched in several ways. If you'd like to start Nexus AI before navigating to a website, select **Nexus AI** in the **Silo Tools** section of the interface. Alternatively, if you'd like to launch Nexus AI as you browse, use the **keyboard shortcut** CTRL+ALT+N on Windows or Cmd+Option+N on macOS.



Nexus Controls

Workspace Analyses (Left Panel)

The **Workspace Analyses** panel displays previously created analysis topics and their associated results. Selecting a topic reloads its saved context and outputs. Each Silo Workspace has its own Nexus AI conversation history.

Example: Conversations started in the "Berlin" workspace appear only in that workspace's Analyses list. Conversations in the "Los Angeles" workspace are separate. This isolation helps you organize investigations by case, mission, or attribution

Click **+ New** to initiate a new analysis topic.

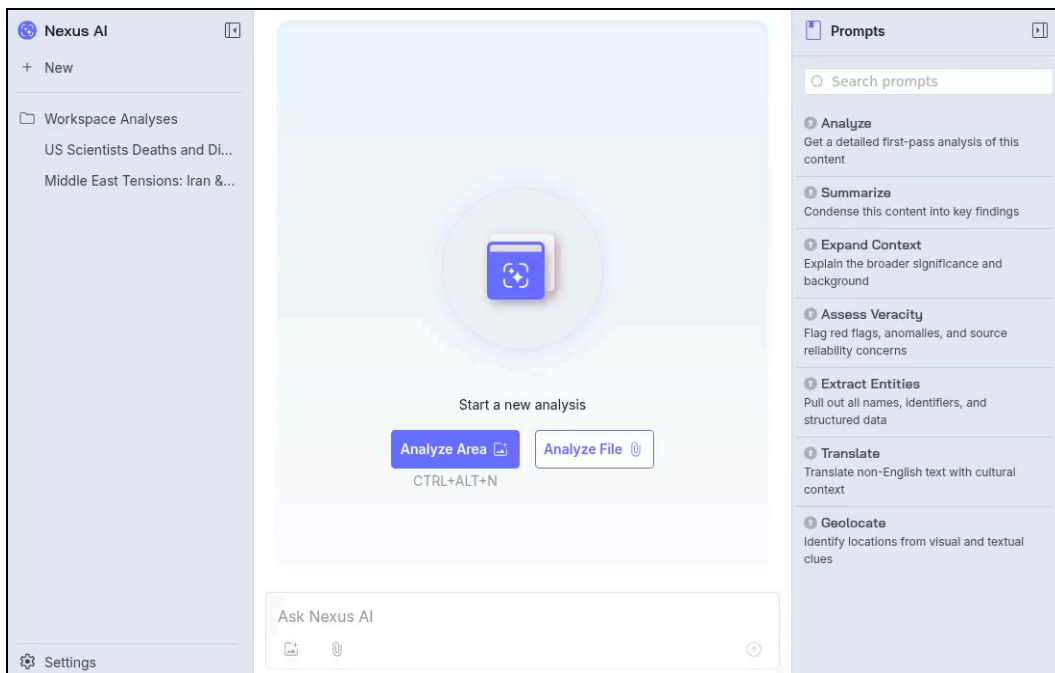
Analysis Workspace (Center Panel)

The central workspace is used to initiate and configure new analyses:

- **Analyze Area:** Capture specific areas of content within the Workspace browser and use it as input for analysis.
- **Analyze File:** Allows users to upload one or more files as input to the analysis process.
- **Instruction Input:** Provides a free-form text field for defining custom prompts or initial analysis instructions.

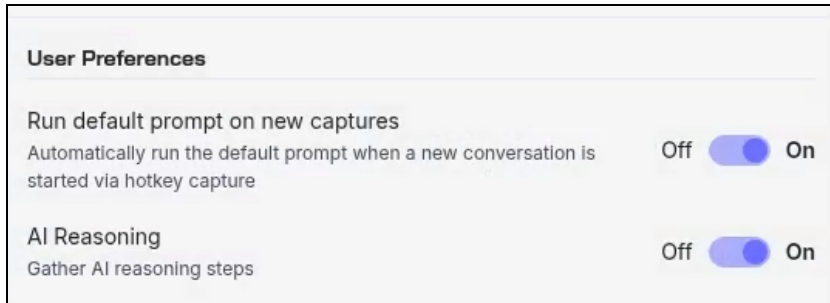
Prompts (Right Panel)

The **Prompts** panel provides access to administrator-defined, preconfigured prompts. These prompts can be used to quickly initiate common analysis workflows or standardize user input.



Settings

The **Settings** menu allows users to configure how Nexus AI analyzes content.

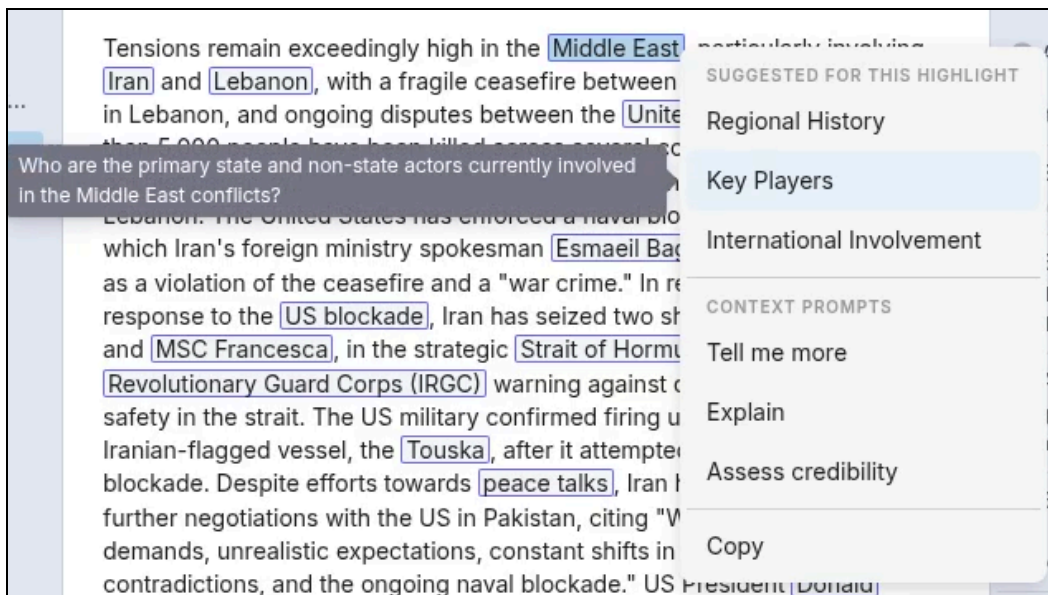


Analysis Features

Context Menu Actions

Highlighted entities within Nexus AI responses—such as names, locations, and key phrases—indicate that additional actions are available. Right-clicking a highlighted item opens a context menu with options to expand the analysis.

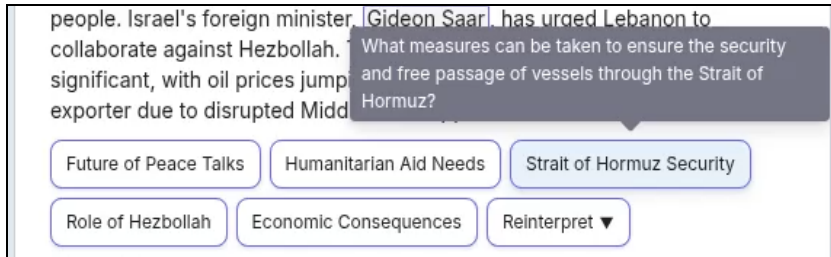
- **Suggested for this Highlight:** Surfaces-related topics for quick research pivots.
- **Context Prompts:** Generate follow-up analysis using the selected item as input.



Next Steps

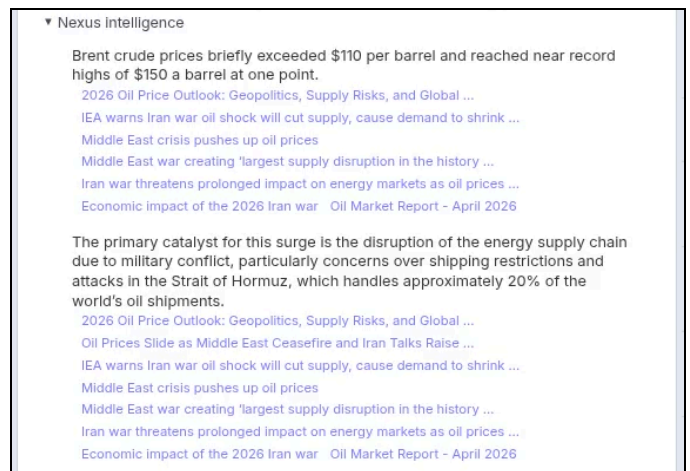
Nexus AI recommends next steps as alternative analytical lenses (perspectives or areas of focus), each linked to a prompt that continues the analysis.

- **Left-click** a suggestion to run the associated prompt.
- **Hover** to preview the prompt before execution.



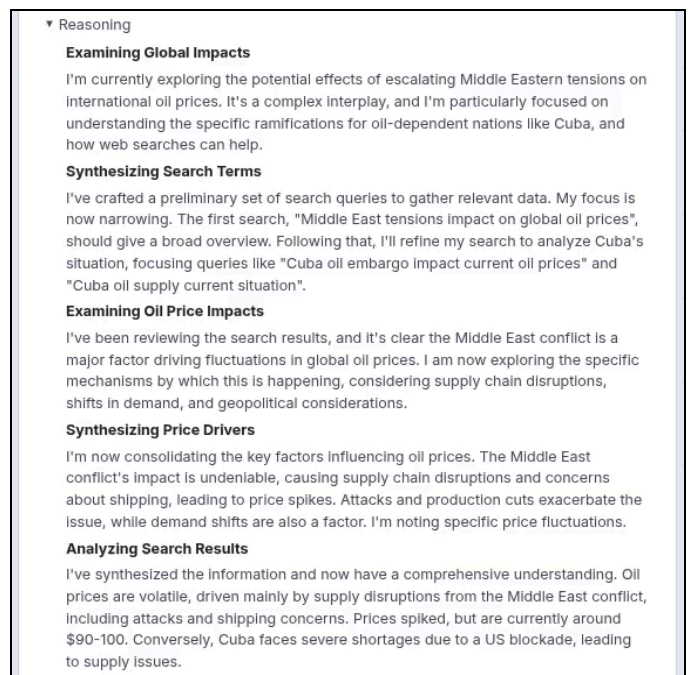
Grounded Truth

Nexus Intelligence provides source references used during the analysis process. These citations link to the external content that informed the model's outputs, allowing users to review the underlying material, validate key findings, and better understand how the analysis was constructed.



Clearly Defined Reasoning

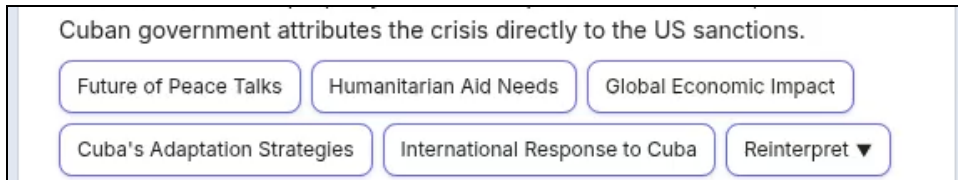
The **Reasoning** section provides a structured explanation of how the analysis was generated. It outlines the key factors, relationships, and assumptions considered, and shows how different inputs were evaluated and synthesized. This helps users understand how conclusions were derived, assess the validity of the analysis, and trace how multiple elements of the topic are connected.



Reinterpret a Prompt

The **Reinterpret** option re-executes the analysis against the original input using a modified prompt. This produces a new output, along with refreshed Contextual Suggestions and Next Steps aligned to the selected perspective.

Before:



Cuban government attributes the crisis directly to the US sanctions.

Future of Peace Talks Humanitarian Aid Needs Global Economic Impact

Cuba's Adaptation Strategies International Response to Cuba Reinterpret ▼

During:



Reinterpret your last response from the following angle:
International Law Lens

After:



suggest that the U.S.'s military actions against Venezuela and Iran are partly driven by strategic interests in controlling oil resources.

Jurisdiction of International Courts Enforcement of International Law

Role of the UN Security Council Accountability for Non-State Actors

Impact of Sanctions on Human Rights Reinterpret ▼

Troubleshooting

Below is a common list of errors or notifications that may occur when using Nexus AI.

Issue: "Nexus AI is not available," or the icon doesn't appear

Cause: Your organization hasn't enabled Nexus AI, or you're on a Legacy SKU.

Solution:

1. Check your Silo SKU — Legacy SKUs (Starter Pack, Toolbox, Toolbox Darkweb) don't include Nexus AI
2. Contact your administrator to enable Nexus AI for your organization
3. If recently upgraded, refresh your Silo session (log out and back in)

Issue: "Daily query limit reached" appears before 10 queries

Cause: Query limit is global across all workspaces and all interactions (including Active Annotations).

Solution:

1. Check your query count across ALL workspaces you've used today
2. Remember: Follow-up questions and Active Annotation clicks each count as 1 query
3. Wait until midnight UTC for the limit to reset, or ask your admin about the Unlimited tier

Issue: Ctrl+Alt+N hotkey doesn't work

Cause: Conflicting keyboard shortcut or browser focus issue.

Solution:

1. Verify you're inside a Silo Workspace (not on the Silo start page)
2. Check for conflicting OS-level shortcuts (Ctrl+Alt+N may be mapped to another app)
3. Alternative: Click the Nexus AI icon in the Silo Map Quick Actions panel
4. On Mac, use **Cmd+Option+N** instead

Issue: Attached images don't appear in the Files tab

Cause: File size exceeds 7 MB limit, or unsupported format.

Solution:

1. Check file size — compress images over 7 MB before attaching
2. Supported formats: PNG, JPEG, WebP, HEIC, HEIF
3. For other formats (PDF, documents), export as images first
4. Max 20 images per message — split large batches across multiple messages

Issue: Conversation didn't auto-save

Cause: Auto-save disabled in Settings, or workspace was deleted before save.

Solution:

1. Open Settings → verify "Auto-save conversations" is enabled
2. Manually save: File menu → Save As → choose location in Silo Drive
3. For important conversations, export as backup (PDF or .nexus file)

Issue: Can't find a conversation I saved yesterday

Cause: Conversation saved in a different workspace, or file moved/deleted.

Solution:

1. Check the "Other Analyses" section in the left sidebar (shows conversations from other workspaces)
2. Search Silo Drive for **.nexus** files: open File Manager → search ***.nexus**
3. If the conversation was in a deleted workspace, check Silo Drive → Trash folder
4. Ask teammates if the conversation was moved to a Shared Silo Drive folder

Issue: Nexus AI response stopped mid-sentence

Cause: Network interruption, API timeout, or the user clicked the Stop button.

Solution:

1. Check your network connection — Nexus AI requires an active internet connection
2. Refresh the workspace and reopen the conversation
3. Re-send your last message — Nexus AI will generate a new response
4. For persistent issues, check the Authentic8 status page: <https://status.authentic8.com>

Issue: Citations link to paywalled or inaccessible content

Cause: Source material requires a subscription or is geo-restricted.

Solution:

1. Use Silo Workspace's managed attribution to access geo-restricted content
2. Check if your organization has institutional access to paywalled sources
3. Look for alternative sources in the Grounded Truth section
4. Use Reinterpret to ask Nexus AI to find open-access alternatives

Issue: The shared .nexus file won't open for a teammate

Cause: File permissions, or the teammate's organization doesn't have Nexus AI enabled.

Solution:

1. Verify the .nexus file is in a **Shared Silo Drive** (not My Drive)
2. Check folder permissions — ensure teammate has read access
3. Confirm teammate's organization has Nexus AI enabled
4. Alternative: Export the conversation as a PDF and share that instead

FAQ - Frequently Asked Questions

Using Nexus AI

Can Nexus AI access all content in my Silo session?

No. Nexus AI does not have access to Silo session data or content unless you explicitly provide it. AI processing is based strictly on user-provided inputs through text, file upload, or the Nexus AI screenshot tool. The screenshot capability is limited to your active Silo environment and cannot capture content from your local endpoint — device-level data remains completely inaccessible.

Does each workspace have its own conversation history?

Yes. Conversations are scoped to the workspace where they were created. An analysis started in one workspace does not appear in another. This isolation helps you organize investigations by case, mission, or attribution.

Can I search across all my conversations?

Not in v1. You must open each conversation individually to review its contents. Use clear, descriptive titles when saving conversations to make them easier to find later. A global search feature is planned for a future release.

What happens to my conversations when I delete a workspace?

Your conversations are stored in Silo Drive and will be deleted when the workspace is removed. To keep them, use the File Manager to move the conversations to another storage container before deleting the workspace.

Can I customize the prompts in the Prompt Library?

Only Silo administrators can create, edit, or delete prompts in the Prompt Library. If you need a new prompt or want to modify an existing one, request it from your administrator. They can add it to the library for your entire team.

What languages does Nexus AI support?

Nexus AI supports English queries and content in v1. Support for additional languages is on the roadmap. If you attach content in other languages, Nexus AI may provide limited analysis or ask you to translate key portions.

Why does Nexus AI sometimes refuse to answer a question?

Nexus AI includes guardrails that prevent it from generating harmful, illegal, or unethical content or providing medical, legal, or financial advice. If a legitimate investigative query is refused, try rephrasing it to clarify the research context. For persistent issues, contact your administrator.

Accuracy and Trust

How accurate is Nexus AI?

Nexus AI is a tool that augments your expertise and reduces research time while surfacing leads, but it is not a replacement for analyst judgment, and you remain the final authority on what to trust and act on. Always:

- **Review Nexus Intelligence** (Grounded Truth) citations to verify the sources behind each response
- Check the **Reasoning** steps to understand how the conclusions were reached
- Cross-reference findings with other intelligence sources
- Apply your own expertise and investigative tradecraft

How can I verify the information Nexus AI provides?

Every Nexus AI response includes two built-in verification tools to validate findings:

1. **Nexus Intelligence** (Grounded Truth) — Provides source citations with links to the original material so you can review the evidence directly.
2. **Reasoning** — Shows the analytical steps and assumptions used to arrive at conclusions, allowing you to assess whether the logic is sound.

Sharing and Collaboration

How do I share a conversation with a teammate?

Save your conversation to a Shared Silo Drive folder. Your teammate can open the .nexus file from their own workspace, provided their organization has Nexus AI enabled and they have read access to the shared folder.

How do I share a conversation with someone outside my organization?

To export a conversation, first, export it as a PDF. Download the PDF locally, if permitted by egress policy, and share it via approved channels. Always strictly adhere to organizational data classification and sharing policies, as exported PDFs may contain sensitive intelligence.

Can I use Nexus AI for personal (non-work) research?

Check your organization's acceptable use policy. Nexus AI is a professional tool designed for digital investigations. Personal use may count against your daily query limit and will be logged in audit records, which are visible to your administrator.

Limits and Availability

How many queries do I get per day?

The included Nexus AI Lite tier provides 10 queries per user per day. This limit applies to all workspaces, and every interaction counts — including follow-up questions and Active Annotation clicks. The limit resets at midnight UTC. An Unlimited tier is available as a paid add-on; contact your administrator for details.

What counts as a "query"?

Each of the following counts as one query:

- An initial analysis (screenshot capture or file upload)
- A follow-up question typed in the conversation
- Clicking an Active Annotation for a contextual pivot
- Running a prompt from the Prompt Library
- Using Reinterpret to re-analyze content

Privacy and Anonymity

Does my identity get shared with the AI provider?

No. All Nexus AI requests are routed through Authentic8-controlled infrastructure within the FedRAMP authorization boundary. The AI provider receives only the processing request and does not have visibility into your identity, organization, device, or Silo session. This architecture ensures that your requests are managed, secured, and non-attributable.

Can the AI provider see what websites I'm investigating?

The AI provider receives only the content you capture for analysis — a screenshot or attached file — along with your prompt. It does not receive the URL you were visiting, your browsing history, or any session metadata. The provider cannot determine what site the content came from or why you are researching it.

Is my data used to train AI models?

No. Authentic8's licensing model ensures that your queries, captured content, and AI responses are never retained by the external AI provider for model training or any other purpose.

Who can see my Nexus AI activity?

Your organization's authorized administrators can access detailed interaction records (prompts, responses, captured content) through encrypted audit logs. These logs are encrypted with your organization's own keys. Authentic8 does not have visibility into this content — Authentic8 collects only anonymized operational metadata (timestamps, usage counts, model used) to support service performance and abuse prevention. The AI provider sees none of this data.

Security and Data Protection

How is my data protected during analysis?

Your data is protected at every stage:

- **In transit** — All communication between Nexus AI and the AI service is encrypted using TLS with FIPS-validated cryptography.
- **At rest** — Saved conversations and analysis artifacts are encrypted using Silo's existing Secure Storage mechanisms and protected with cryptographic integrity checks.
- **In processing** — Nexus AI runs in an isolated container, separated from your browser and other applications within the Silo session. It cannot access content from other users, other sessions, or the host operating system.

Is my data isolated from other users?

Yes. Nexus AI is deployed as part of Authentic8's FedRAMP-authorized Silo platform. AI processing is performed using a FedRAMP-authorized service (Google Vertex AI) through a controlled and secured integration. No other user — even within the same organization — can access your conversations, captured screenshots, or analysis results unless you explicitly share them via Silo Drive.

What happens to my data when my Silo session ends?

Nexus AI runs in a secure, ephemeral container that is fully destroyed at session end, ensuring no transient processing data persists. While user-generated prompts and AI responses may be retained in your encrypted Silo Drive for continuity of work, any temporary processing data used during AI execution is completely eradicated when the container is destroyed.

What happens if Nexus AI experiences a failure?

Nexus AI is designed so that a failure does not impact your core Silo Workspace session. If Nexus AI encounters an error, your browser, other workspace applications, and any in-progress work continue to operate normally. You can close and reopen Nexus AI, or refresh your workspace to recover.

Can another user in my organization see my Nexus AI conversations?

Not unless you explicitly share them. Nexus AI enforces full user isolation. No other user — even within the same organization — can access your conversations, captured screenshots, or analysis results unless you export and share them via Silo Drive.



Silo Workspace is the digital investigation platform that protects, masks, and accelerates direct engagement at the source. With isolated multi-app workspaces, a global managed attribution network, integrated capture and analysis tooling, and enterprise-grade controls, Silo is your unified workspace to enter the threat environment.

© Authentic8, Inc. All rights reserved. 04272026

Learn more
+1 877-659-6535
www.authentic8.com